

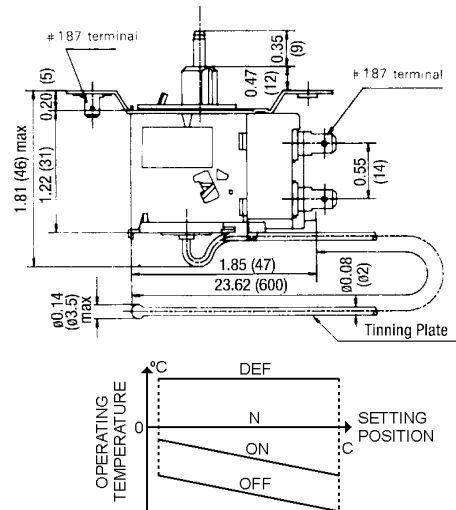
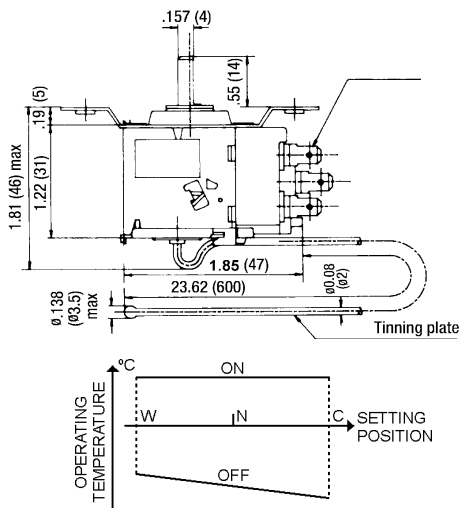
Cold Capillary Controls

WD and WS Series



APPLICATIONS

- Refrigerators



WD Series - Constant Cut-in Thermostat

The WD Series provides Forced ON or Forced OFF and automatic cycle defrosting in refrigeration systems. Cut-in temperature varies at each cam position, but defrosting temperature remains the same. It is used as a component of controlling in 2-door and 2-temperature refrigerators and freezers. Mainly built to custom specifications, it comes complete with a variety of mounting hardware, including brackets, terminals, dial plates and knobs.

WS Series - Push Button Defrost Thermostat

The WS Series has a combined function of refrigerator cycling control and manual defrosting with a push button shaft in the center of the adjusting shaft. Defrost starts when the push button is pressed, and it terminates automatically as temperature rises to a pre-set point. Then the unit continues its normal running cycle.

SPECIFICATIONS

Temperature range	ON: +37°F to 43°F (3°C to 6°C) OFF: -22°F to 24°F (-30°C to -4°C)
Maximum temperature range	66°F (19°C)
Differential	14°F to 64°F (8°C to 36°C)
Contact resistance	<50m Ω
Insulation resistance	>100m Ω
Dielectric strength	AC 50/60Hz, 1500V/1 minute
UL/CSA electrical ratings	125VAC, 8 Amps, Resistive 250VAC, 5 Amps, Resistive
Inductive load ratings	125VAC, 6FLA, 36LRA 250VAC, 4FLA, 24LRA
VDE electrical ratings	250VAC, 5 Amps
Approvals	UL Recognized File No. E195847, SDFY2 C-UL Recognized File No. E195847, SDFY8, VDE, SEMKO RoHS Compliant

SPECIFICATIONS

Temperature range	-18°F to 45°F (-28°C to 7°C)
Maximum temperature range	32°F (18°C)
Differential	12°F to 25°F (6°C to 14°C)
Defrost reset temperature	6°F to 12°F (3°C to 7°C)
Contact resistance	<50m Ω
Insulation resistance	>100M Ω
Dielectric strength	AC 50/60Hz, 1500V/1 minute
VDE electrical ratings	250VAC, 5 Amps
Shift of defrosting shaft	3.7 ± 5mm
Approvals	RoHS Compliant

It is the customer's sole responsibility to specify and determine the suitability of a particular control or component based on their unique individual applications and requirements

(714) 917-1333 • (800) 257-3526 • FAX (714) 917-1355 • E-mail: sales@selcoproducts.com