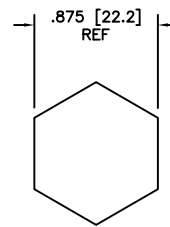
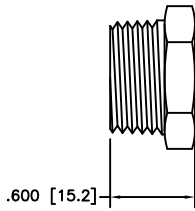



- NOTES:  
 1. PROBE MATERIAL IS STAINLESS STEEL  
 2. THREAD 1/2 NPT

FOR REFERENCE ONLY



|   |                        |                  |   |  |           |
|---|------------------------|------------------|---|--|-----------|
| MATERIAL<br>N/A                                     | DRAWN<br>K.MCCRAY      | DATE<br>10-19-11 | <br>8780 TECHNOLOGY WAY, RENO, NV 89521 800-257-3526 |  |           |
| HEAT TREATMENT<br>N/A                               | CHECKED<br>J.GRANT     | 10-19-11         |   |  |           |
| FINISH<br>N/A                                       | PROJ. ENG.<br>D.MILLER | 10-19-11         | HOUSING NO.<br>DESCRIPTION  | P25<br>DIMENSIONAL OUTLINE DRAWING FOR PROBE |           |
| UNLESS OTHERWISE SPECIFIED DIMENSIONS ARE IN INCHES |                        | APPROVED<br>W.W. | TOLERANCE:  |  |           |
|   |                        |                  | SIZE<br>A   | CODE INDENT NO.<br>1G5X3                     | REV.<br>A |
|   |                        |                  | SCALE: NONE   | SHEET: 1 OF 1                                |           |

PROPRIETARY NOTICE

THIS MATERIAL IS THE PROPERTY OF SELCO PRODUCTS AND MAY NOT BE USED, REPRODUCED, PUBLISHED, OR DISCLOSED TO OTHERS WITHOUT EXPRESSED PERMISSION BY SELCO PRODUCTS FOR EACH AND EVERY INSTANCE.

E  
D  
C  
B  
A