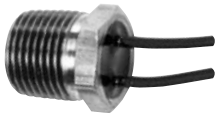


Probe Thermostats

BPO/BPC and CPO/CPC Series

APPLICATIONS

- HVAC
- Refrigeration
- Hydraulic systems
- Motors
- Heaters
- Cooking equipment
- Diesel/Automotive engines



BPO/BPC Series



CPO/CPC Series

BPO/BPC and CPO/CPC Series - SPECIFICATIONS

Snap Action Models

Electrical ratings

Silver contacts

125VAC, 15 Amps, Resistive, 10,000 Cycles

250VAC, 10 Amps, Resistive, 10,000 Cycles

Gold contacts available

Consult Selco for other electrical ratings

Inductive load ratings

120VAC, 5.8FLA, 34.8LRA, 6,000 Cycles

240VAC, 2.9FLA, 17.4LRA, 6,000 Cycles

Temperature range

50°F to 200°F (10°C to 260°C)

Differential

15°F-100°F (8°C ± 56°C)

Creep Action Models

Electrical ratings

Silver contacts

120/240VAC, 6 Amps, Resistive, 100,000 Cycles

120VAC, 5 Amps, Inductive, 100,000 Cycles

Gold contacts available

Consult Selco for DC applications

Temperature range

41°F to 400°F (5°C to 204°C)

Differential

None - creep-action

Tolerance

±9°F (±5°C)

Insulation resistance

100M Ω or more (with a 500VDC megger)

Circuit resistance

50m Ω or less (initial value)

Dielectric strength

1500VAC/1 minute

Pressure rating

Consult Selco

Materials

Body & tube

Brass or stainless steel

Headfill

Epoxy filled

Contacts

Silver or gold

Wire

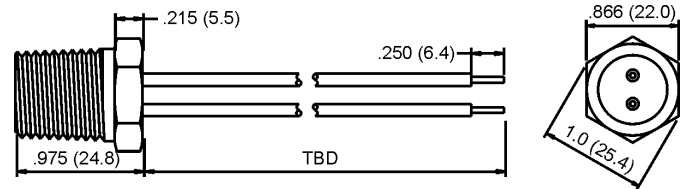
18AWG, UL3173, Black

18AWG, UL1015, Black

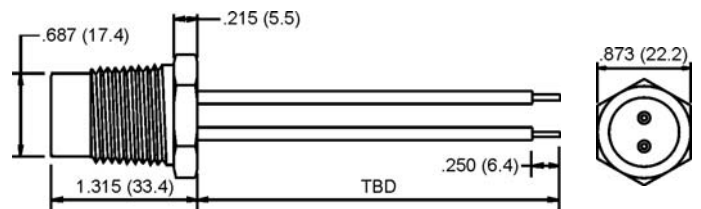
Other lead options available

Selco probe thermostats are thermally sensitive bimetallic switches which when reaching a fixed factory set temperature, either opens or closes to break or make an electrical circuit. They reset automatically on cooling. Some devices can be used as controlling thermostats which cycle open and close more rapidly to maintain temperature level. Other devices can be used as over temperature protectors to limit a temperature from exceeding a predetermined value (safety device). The unit may be immersed safely in liquids under substantial pressure allowing thermostatic control to be achieved in the chemical, automotive, aerospace, HVAC, and environmental fields. Custom probe housings available, consult Selco for other models available from stock.

BPO/BPC Series

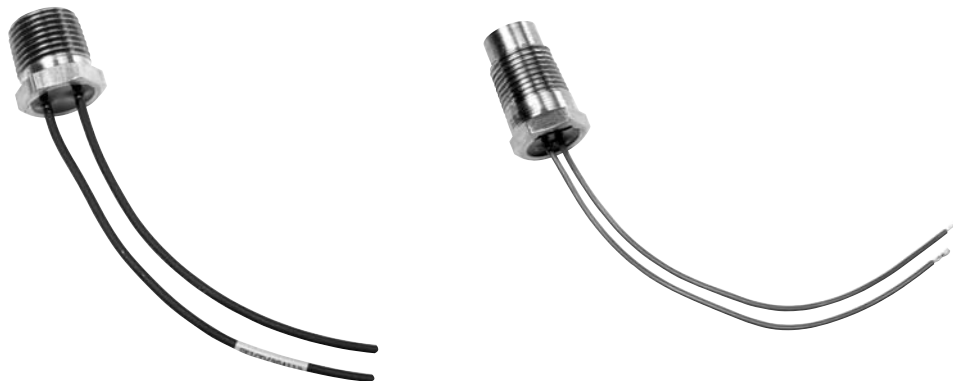


CPO/CPC Series



Special Model Designations for BPO/BPC and CPO/CPC Series

Style No.	Thread NPT	2-Pipe Thread NPT	Tube Length (inches)	Material
P11	1/2	-	0.35	stainless
P12	1/2	-	0.625	stainless
P13	1/2	1/4	0.5	brass
P14	1/2	-	0.625	brass
P17	1/2	-	-	brass
P18	1/2 x 1/4	-	1.5	stainless



It is the customer's sole responsibility to specify and determine the suitability of a particular control or component based on their unique individual applications and requirements

(714) 917-1333 • (800) 257-3526 • FAX (714) 917-1355 • E-mail: sales@selcoproducts.com